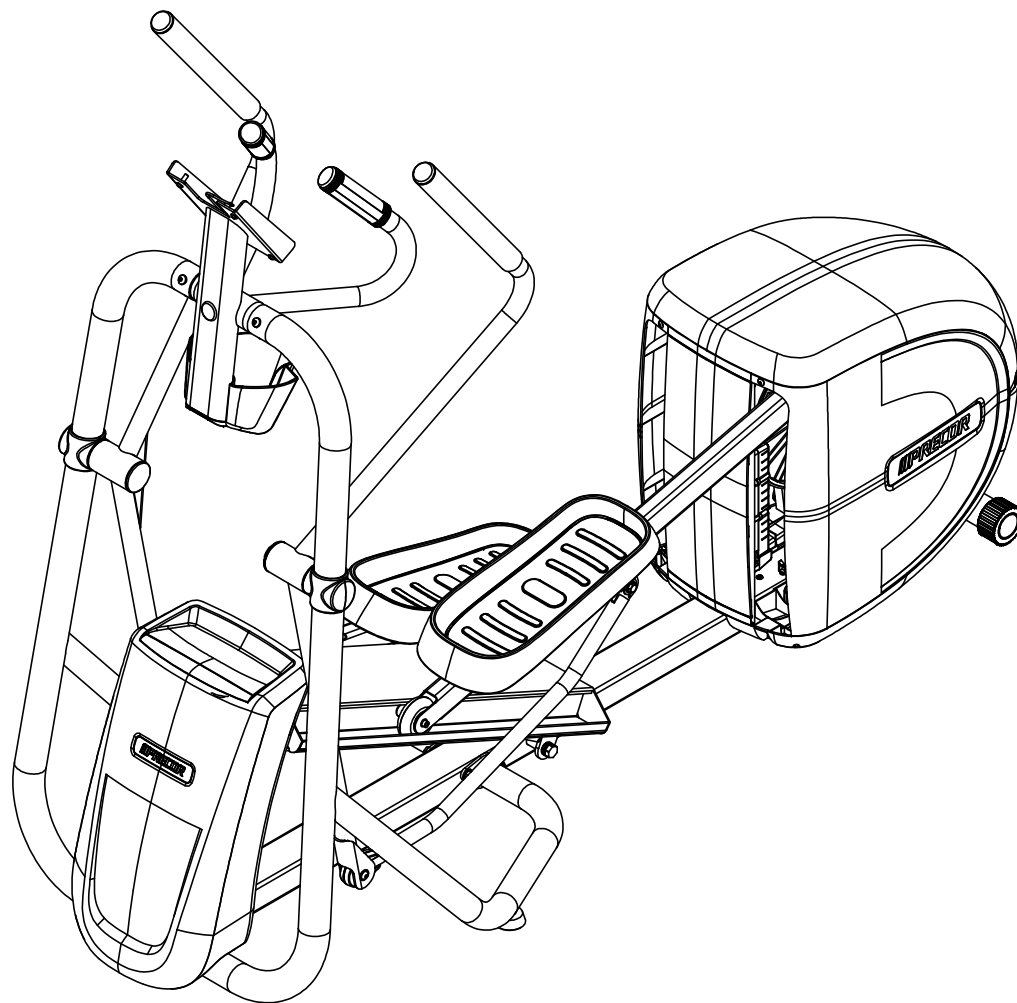


D

C

B

A



NOTES:

1 HEART RATE WIRE HARNESS IS NOT FIELD REPLACEABLE, ORDER 37.

PRODUCT:				EFX200-14, MVG ARMS, CROSSRAMP			
DRWN BY	6/11/14	KAW	SIZE	PAGE	DWG. NO.	SUBREV	
CS	6/11/14	BG	A	1 OF 4	303232-101	A01	

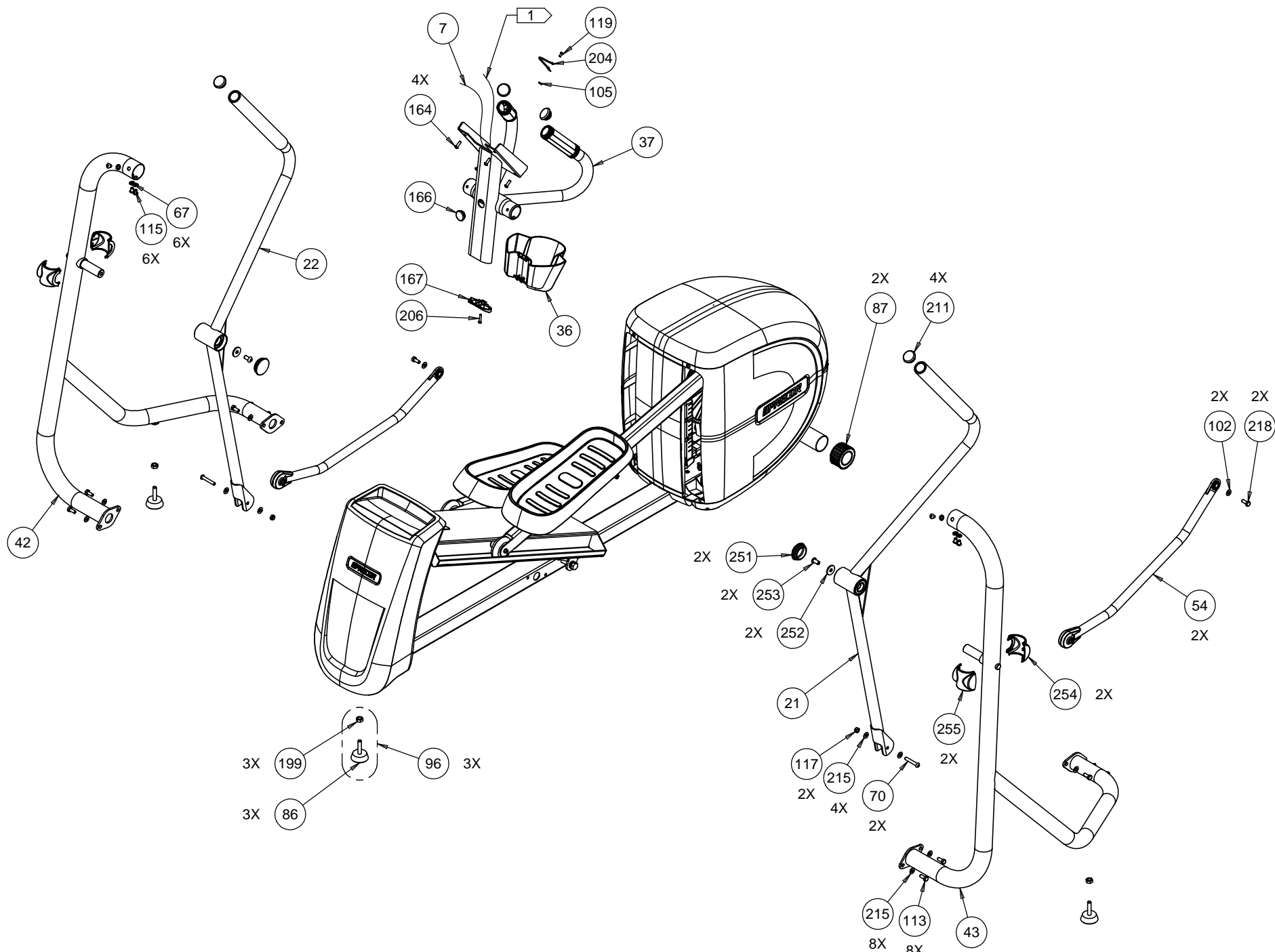
DRAWING TEMPLATE REV. B

D

C

B

A



D

C

B

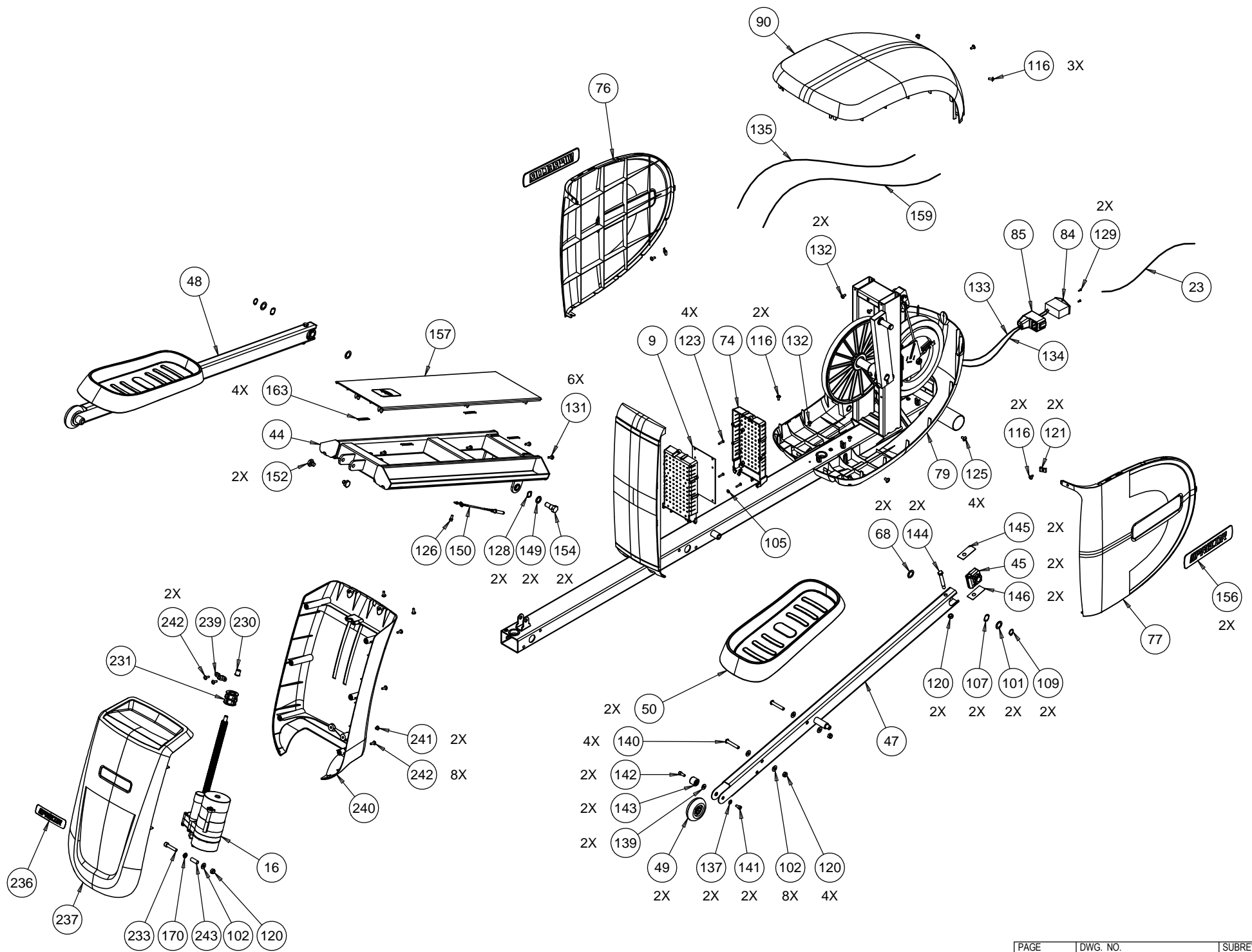
A

4

3

2

1



Bubble #	Part Number	Description
7	PPP000000RX3J66000	WIRE HARNESS MAIN(REXON P/N 10K23J6
9	PPP000000RX3FW7000	CONTROLLER ASS'Y(REXON P/N 10K23FW7
11	PPP000000RX31FW000	REED SWITCH(REXON P/N 10H131FW)
12	PPP000000RX01H5000	MAGNET
16	PPP000000RX3PWD000	INCLINE MOTOR ASS'Y(REXON P/N 10E93
21	PPP000000RX3G28000	LEFT LEVER ARM. GRAPHITE(REXON P/N
22	PPP000000RX3G29000	RIGHT LEVER ARM. GRAPHITE(REXON P/N
23	PPP000000RX2Q2V000	POWER CABLE(REXON P/N 10E72Q2V)
29	PPP000000RX2S9Y000	
36	PPP000000RX3FWZ000	WATER BOTTLE HOLDER(REXON P/N 10K23
37	PPP000000RX3G2A000	CONSOLE MAST ASS'Y(REXON P/N 10K23G
42	PPP000000RX3FX4000	FRONT SUPPORT TUBE ASS'Y-R(REXON P/
43	PPP000000RX3FX2000	FRONT SUPPORT TUBE ASS'Y-L(REXON P/
44	PPP000000058229101	CS KIT, RAMP KIT, EFX2X5 (REXON PN
45	PPP000000RX2WYA000	SHAFT SLEEVE ASS'Y
47	PPP000000RX3FZK000	PEDAL TUBE ASS'Y-L(REXON P/N 10K23F
48	PPP000000RX3FZJ000	PEDAL TUBE ASS'Y-R(REXON P/N 10K23F
49	PPP000000RX30VL000	ROLLING WHEEL ASS'Y(REXON P/N 10H13
50	PPP000000RX3FZT000	PEDAL(REXON P/N 10K23FZT)
54	PPP000000RX3G27000	LINKGE ASS'Y(REXON P/N 10K23G27)
58	PPP000000RX30V6000	CRANK ASS'Y(REXON P/N 10H130V6)
61	PPP000000RX30VK000	PULLEY ASS'Y(REXON P/N 10H130VK)
62	PPP000000RX2JTH000	DRIVE BELT, POLY-V BELT
63	PPP000000RX30VJ000	IDLER WHEEL ASS'Y(REXON P/N 10H130V
65	PPP000000RX31GW000	MAGNETIC BRAKE ASS'Y(REXON P/N 10H1
66	PPP000000RX21BB000	NUT
67	PPP000000RX0J9D000	SPRING WASHER(REXON P/N 2502AZC416)
68	PPP000000RX0J5W000	FLAT WASHER(REXON P/N 2501MNN340)
69	PPP000000RX32GH000	HEX. SOC. HD. CAP BOLT(REXON P/N 26
70	PPP000000RX34FW000	HEX. SOC. TRUSS HD. SCREW(REXON P/N
71	PPP000000RX3FZS000	BEARING COVER(REXON P/N 10K23FZS)

74	PPP000000RX3FXJ000	COVER(REXON P/N 10K23FXJ)
76	PPP000000RX3L7Q000	ASSY,SIDE COVER,RIGHT(REXON P/N 10H
77	PPP000000RX3L7M000	ASSY,SIDE COVER,LEFT(REXON P/N 10H1
78	PPP000000RX3G00000	FRONT HOUSING(REXON P/N 10K23G00)
79	PPP000000RX3G26000	CASE BOTTOM ASS'Y (REXON P/N 10K23G
84	PPP000000RX32J3000	AC SOCKET ASS`Y(REXON P/N 10H132J3)
85	PPP000000RX3H8R000	WIRE PROTECTION SLEEVE(REXON P/N 10
86	PPP000000RX26LH000	LEVELING PAD(REXON P/N 10B826LH)
90	PPP000000RX3FZX000	COVER(REXON P/N 10K23FZX)
100	PPP000000RX01HL000	D.C MOTOR ASS'Y(REXON P/N 1A503003A
101	PPP000000RX0J52000	FLAT WASHER(REXON P/N 2501MBDN47)
102	PPP000000RX0J5G000	FLAT WASHER,8 X 18 X 1.5, STEEL, E-
103	PPP000000RX0J7B000	FLAT WASHER(REXON P/N 2501NBDN22)
104	PPP000000RX0J94000	SPRING WASHER(REXON P/N 2502ABC416)
105	PPP000000RX0JAE000	EXTERNAL TOOTH LOCK WASHER
105	PPP000000RX0JAF000	EXTERNAL TOOTH LOCK WASHER(REXON P/
107	PPP000000RX0JB4000	WAVE WASHER(REXON P/N 2506MBN616)
109	PPP000000RX0JED000	C-RING(REXON P/N 2570BBN116)
110	PPP000000RX0JFP000	C-RING(REXON P/N 2570HBN120)
111	PPP000000RX0JGD000	PARALLEL KEY(REXON P/N 2571MNC319)
112	PPP000000RX0JP4000	HEX. HD. BOLT(REXON P/N 2601BBDA9)
113	PPP000000RX0JRA000	HEX. HD. BOLT(REXON P/N 2601BZDA55)
114	PPP000000RX0KQZ000	NUT(REXON P/N 2705FBD110)
115	PPP000000RX3HFT000	HEX. SOC. TRUSS HD. SCREW(REXON P/N
116	PPP000000RX0K99000	CR. RE. TRUSS HD. TAPPING SCREW
117	PPP000000RX0KR4000	LOCK NUT(REXON P/N 2705FZD108)
118	PPP000000RX0KAE000	CR.RE. PAN HD. TAPPING SCREW
119	PPP000000RX0KAP000	CR.RE. PAN HD. TAPPING SCREW
120	PPP000000RX0KQY000	LOCK NUT
121	PPP000000RX0KRK000	U-TYPE NUT
122	PPP000000RX0WRG000	HEX. HD. BOLT

123	PPP000000RX0KAL000	CR.RE. PAN HD. TAPPING SCREW(REXON
124	PPP000000RX1568000	FLAT WASHER
125	PPP000000RX22R9000	CR.-RE. TRUSS HD. SCREW
126	PPP000000RX22XT000	HEX.SOCKET HD.CAP SCREWS
129	PPP000000RX2ENV000	CR. RE.COUNT HD. TAPPING SCREW
130	PPP000000RX2JS2000	FLAT WASHER
131	PPP000000RX0KCX000	PAN HD PLAIN WASHER SELF TAPPING SC
132	PPP000000RX2PHA000	CR. RE. TRUSS HD. TAPPING SCREW
133	PPP000000RX32GW000	WIRE HARNESS MAIN(REXON P/N 10H132G
134	PPP000000RX2R2Z000	GND WIRE(REXON P/N 10E92R2Z)
135	PPP000000RX2RKD000	GND WIRE(REXON P/N 10E92RKD)
137	PPP000000RX0J4E000	FLAT WASHER
139	PPP000000RX0J74000	FLAT WASHER
140	PPP000000RX21RE000	HEX. SOC. TRUSS HD. SCREW
141	PPP000000RX2NAN000	HEX. SOC. HD. CAP BOLT
142	PPP000000RX2RYF000	HEX. SOC. HD. CAP BOLT
143	PPP000000RX3TWY000	ANCHOR BLOCK(REXON P/N 10H13TWY)
144	PPP000000RX2SEW000	SPECIAL BOLT(REXON P/N 10E92SEW)
145	PPP000000RX2UVP000	BUMPER,BLACK (REXON P/N 10E92UVP)
150	PPP000000RX2SQ0000	LATCH(REXON P/N 10E92SQ0)
151	PPP000000RX2UJ3000	REED SWITCH BRACKET(REXON P/N 10F62
152	PPP000000RX2ULS000	CLAMP BOLT
153	PPP000000RX2YQ3000	HEX. SOC. HD. CAP BOLT(REXON P/N 26
154	PPP000000RX30WG000	SPECIAL BOLT(REXON P/N 10H130WG)
156	PPP000000RX3HNL000	TRADE-MARK LABEL(REAR)(REXON P/N 10
157	PPP000000RX3FZR000	RACK BLADE GUARD(REXON P/N 10K23FZR
158	PPP000000RX31FU000	BRAKE LEADWIRE(REXON P/N 10H131FU)
159	PPP000000RX31FV000	LEAD WIRE ASS'Y(REXON P/N 10H131FV)
163	PPP000000RX32EF000	FOAM(REXON P/N 10H132EF)
164	PPP000000RX3B4S000	BHCS, 1/4-20UNC X 3/4
166	PPP000000RX3FX1000	END CAP(REXON P/N 10K23FX1)

167	PPP000000RX3FX0000	END CAP(REXON P/N 10K23FX0)
168	PPP000000RX2SJV000	END CAP(REXON P/N 10E92SJV)
186	PPP000000RX2SJV000	END CAP(REXON P/N 10E92SJV)
193	PPP000000RX21BF000	STRAIN RELIEF
194	PPP000000RX2R2W000	ASSY,CBL,COUPLER-UPCA
195	PPP000000RX2RJP000	EARTH LABEL(REXON P/N 10E92RJP)
196	PPP000000RX2SDE000	CORD CLAMP
197	PPP000000RX2QX5000	
199	PPP000000RX0KNM000	HEX. NUT
200	PPP000000RX3G2U000	HARDWARE BAG ASS'Y(REXON P/N 10K23G)
201	PPP000000RX3HYF000	HARDWARE BAG ASS'Y(REXON P/N 10K23H)
204	PPP000000RX2872000	CBL,1C,18AWG,#10 RING/187X032 QD RE
206	PPP000000RX3AZ6000	CR. RE. PAN HD. SCREW, M5*0.8-25,(R
210	PPP000000RX3541000	CR.RE. PAN HD. TAPPING SCREW(REXON
211	PPP000000RX2SJV000	END CAP(REXON P/N 10E92SJV)
212	PPP000000RX2RPU000	NEUTRAL LABEL(REXON P/N 10E92RPU)
214	PPP000000RX0JEE000	C-RING
214	PPP000000RX3GEV000	REGULATORY LABEL(REXON P/N 10K23GEV)
215	PPP000000RXY40N000	FLAT WASHER(REXON P/N 2501MED047)
216	PPP000000RX01FE000	STICKER(REXON P/N 1A409701)
218	PPP000000RX2T03000	HEX. HD. BOLT(REXON P/N 26012T03)
219	PPP000000RX2T5X000	RETAINING CLIP(REXON P/N 10E92T5X)
220	PPP000000RX0KBP000	CR.RE. PAN HD. TAPPING SCREW
231	PPP000000RX2RAB000	CLAMP SCREW(REXON P/N 10E92RAB)
233	PPP000000RX0JUZ000	HEX. SOC. HD. CAP BOLT(REXON P/N 26
236	PPP000000RX3HBH000	TRADE-MARK LABEL(FRONT)(REXON P/N 1
237	PPP000000RX3L7S000	ASSY,HOUSING,FRONT(REXON P/N 10H13L
239	PPP000000RX2S70000	RETAINING RING(REXON P/N 10E92S70)
240	PPP000000RX3G2B000	MOTOR REAR COVER ASS'Y(REXON P/N 10
241	PPP000000RX2EN8000	CR.-RE. TRUSS HD. SCREW
242	PPP000000RX0K94000	CR. RE. TRUSS HD. TAPPING SCREW(REX

243	PPP000000RX0KHC000	CR. RE. PAN HD. SCREW
250	PPP000000012223250	FUSE, TIME-DELAY, 2.5A, 250V, 5X20MM
251	PPP000000RX3FZW000	END CAP(REXON P/N 10K23FZW)
252	PPP000000RX2MPQ000	FLAT WASHER
253	PPP000000RX2N7U000	HEX. SOC. TRUSS HD. SCREW
254	PPP000000RX3FZV000	END CAPS(REXON P/N 10K23FZV)
255	PPP000000RX3FZU000	END CAPS(REXON P/N 10K23FZU)
256	PPP000000RX32FF000	CR. RE. PAN HD. TAPPING SCREW
257	PPP000000RX2RBU000	LINK SHAFT(REXON P/N 10E92RBU)
323	PPP000000RX26E8000	FLAT WASHER
355	PPP000000RX0KQW000	LOCK NUT